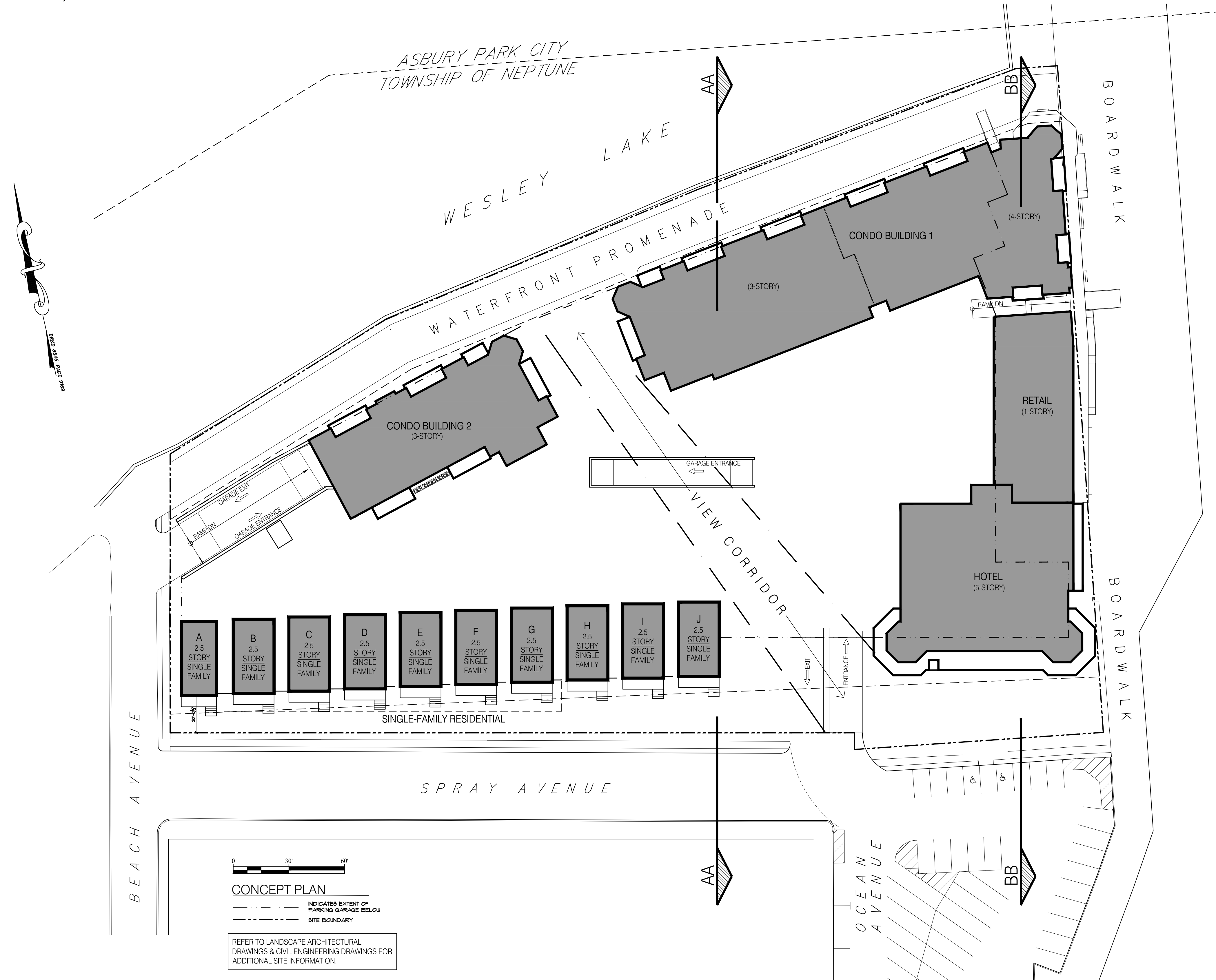


PROPOSED NEW CONSTRUCTION FOR: NORTH END REDEVELOPMENT

TOWNSHIP OF NEPTUNE, NEW JERSEY
BLOCK 101, P/O LOT 2 AND LOTS 3 & 4



PROJECT DATA		
HOTEL (5-STORIES):		
1ST FLOOR	0 ROOMS	8,000 SF
2ND FLOOR	11 ROOMS	7,042 SF
3RD FLOOR	11 ROOMS	7,042 SF
4TH FLOOR	11 ROOMS	7,042 SF
5TH FLOOR	7 ROOMS	6,148 SF
TOTAL	40 ROOMS	35,274 SF
RETAIL (1-STORY):		
1ST FLOOR		7,353 SF
TOTAL		7,353 SF
MULTI-FAMILY BLDG. 1 (3-4-STORIES):		
1ST FLOOR	5 UNITS (2-BDRM)	12,834 SF
2ND FLOOR	10 UNITS (2-BDRM)	15,635 SF
3RD FLOOR	10 UNITS (2-BDRM)	15,635 SF
4TH FLOOR	5 UNITS (2-BDRM)	10,985 SF
TOTAL	30 UNITS	55,089 SF
MULTI-FAMILY BLDG. 2 (3-STORIES):		
1ST FLOOR	2 UNITS (2-BDRM) & 1 UNIT (3-BDRM)	5,964 SF
2ND FLOOR	2 UNITS (2-BDRM) & 1 UNIT (3-BDRM)	5,964 SF
3RD FLOOR	2 UNITS (2-BDRM) & 1 UNIT (3-BDRM)	5,964 SF
TOTAL	6 UNITS	17,892 SF
SINGLE FAMILY RESIDENTIAL 2.5-STORIES:		
DETACHED HOUSE: 10		

USE GROUP CLASSIFICATION:
MIXED USE CONSISTING OF (S-2) PARKING GARAGE, (R-1) HOTEL, (M) RETAIL, CONDOMINIUM UNITS (R-2), SINGLE FAMILY RESIDENCES (R-2), & ASSEMBLY (A-3)

CONSTRUCTION CLASSIFICATION:
TYPE 1B, FULLY SPRINKLERED

DRAWING INDEX	
DWG #	DESCRIPTION
CS	COVER SHEET
A-1	GARAGE LEVEL PLAN
A-2	BUILDING 1- FIRST & SECOND FLOOR PLANS
A-3	BUILDING 1- THIRD & FOURTH FLOOR PLANS
A-4	BUILDING 1- ROOF PLANS
A-5	BUILDING 1- ELEVATIONS
A-6	BUILDING 2- ELEVATIONS
A-7	BUILDING 2- FLOOR PLANS
A-8	BUILDING 2- ELEVATIONS
A-9	HOTEL- GARAGE LEVEL, FIRST, SECOND, THIRD & FOURTH FLOOR PLANS
A-10	HOTEL- FIFTH FLOOR AND ROOF PLANS
A-11	HOTEL- ELEVATIONS
A-12	HOTEL- ELEVATIONS
A-13	SITE SECTION & DETAILS
A-14	SINGLE FAMILY RESIDENCES- SITE PLAN & FRONT ELEVATION (SPRAY AVENUE)
A-15	SINGLE FAMILY RESIDENCES- HOUSE-A PLANS & ELEVATIONS
A-16	SINGLE FAMILY RESIDENCES- HOUSE-B PLANS & ELEVATIONS
A-17	SINGLE FAMILY RESIDENCES- HOUSE-C PLANS & ELEVATIONS
A-18	SINGLE FAMILY RESIDENCES- HOUSE-D PLANS & ELEVATIONS
A-19	SINGLE FAMILY RESIDENCES- HOUSE-E PLANS & ELEVATIONS
A-20	SINGLE FAMILY RESIDENCES- HOUSE-F PLANS & ELEVATIONS
A-21	SINGLE FAMILY RESIDENCES- HOUSE-G PLANS & ELEVATIONS
A-22	SINGLE FAMILY RESIDENCES- HOUSE-H PLANS & ELEVATIONS
A-23	SINGLE FAMILY RESIDENCES- HOUSE-I PLANS & ELEVATIONS
A-24	SINGLE FAMILY RESIDENCES- HOUSE-J PLANS & ELEVATIONS
A-25	DETAILS

CONSULTANTS	
ARCHITECT OF RECORD SHORE POINT ARCHITECTURE, PA 108 SOUTH MAIN STREET OCEAN GROVE, NJ 07756	CIVIL ENGINEER INSITE ENGINEERING, LLC 1913 ATLANTIC AVE., SUITE F4 WALL, NJ 08736
LANDSCAPE ARCHITECT OF RECORD MELILLO AND BAUER ASSOCIATES, INC. 200 UNION AVENUE BRIELLE, NJ 08730	
TRAFFIC ENGINEER MASER CONSULTING, PA 331 NEWMAN SPRINGS RD #203 RED BANK, NJ 07701	

OWNER:
OCEAN GROVE CAMP MEETING ASSN
54 PITMAN AVENUE POB 248
OCEAN GROVE, NJ 07756

APPLICANT:
OG NORTH END DEVELOPMENT, LLC
801 E. MAIN STREET
BELMAR, NJ 07719

PROPOSED NEW CONSTRUCTION FOR:
NORTH END REDEVELOPMENT
(OCEAN GROVE) TOWNSHIP OF NEPTUNE, NJ
BLOCK 101 LOT 2, 3 & 4

SCALE:
[Signature]
Shore Point Architecture, PA
108 South Main Street Ocean Grove, New Jersey 07756
P: 732.774.6900 F: 732.774.7250 www.shorepointarch.com

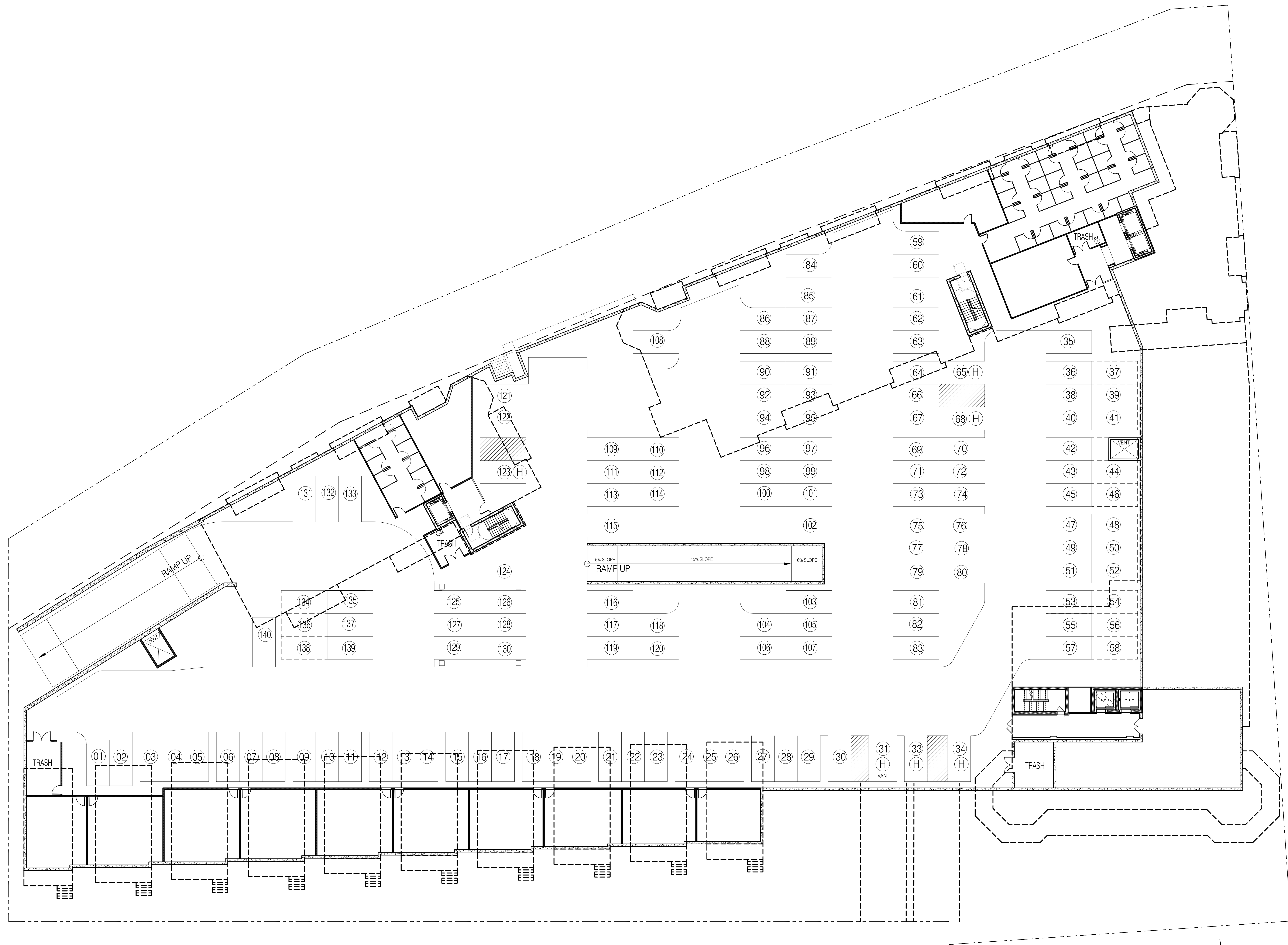
SHORE POINT ARCHITECTURE, PA
108 South Main Street Ocean Grove, New Jersey 07756
P: 732.774.6900 F: 732.774.7250 www.shorepointarch.com

DRAWN: JG
COVER SHEET
SCALE: AS SHOWN

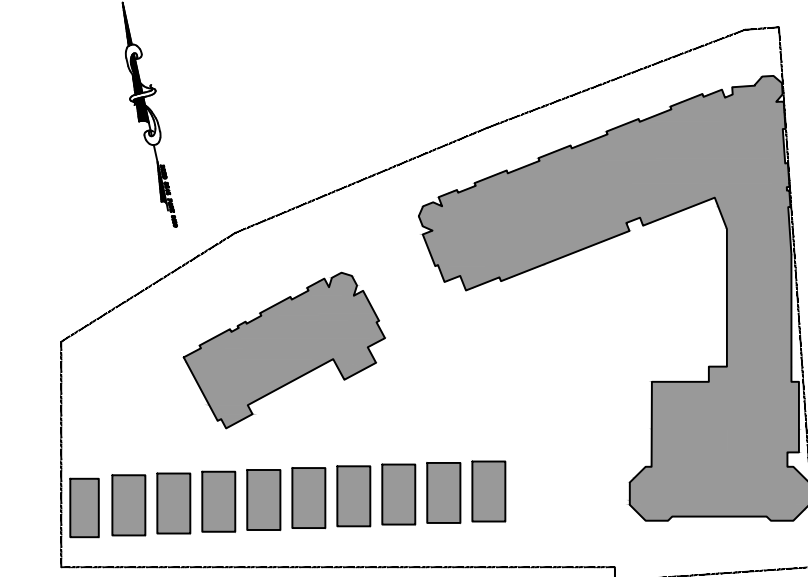
DATE	REVISION
5/14/2019	REDEVELOPMENT ENTITY RESUBMISSION
6/21/2019	PLANNING BOARD SUBMISSION
3/29/2020	HPC REVISIONS PER APPROVAL
4/22/2021	HPC REVISIONS PER APPROVAL
8/19/2021	HPC REVISIONS PER APPROVAL
10/27/2021	HPC REVISIONS PER APPROVAL
1/28/2022	HPC REVISIONS PER APPROVAL

JOB NUMBER
2018-23

CS
NORTH END



GARAGE LEVEL PLAN
1/16"=1'-0"



PROPOSED NEW CONSTRUCTION FOR:
NORTH END REDEVELOPMENT
(OCEAN GROVE) TOWNSHIP OF NEPTUNE, NJ
BLOCK 101 LOT 2, 3 & 4

SCALE:
[Signature]
Shore Point Architecture, PA
108 South Main Street, Ocean Grove, New Jersey 07756
P: 732.774.6900 F: 732.774.7260 www.shorepointarch.com

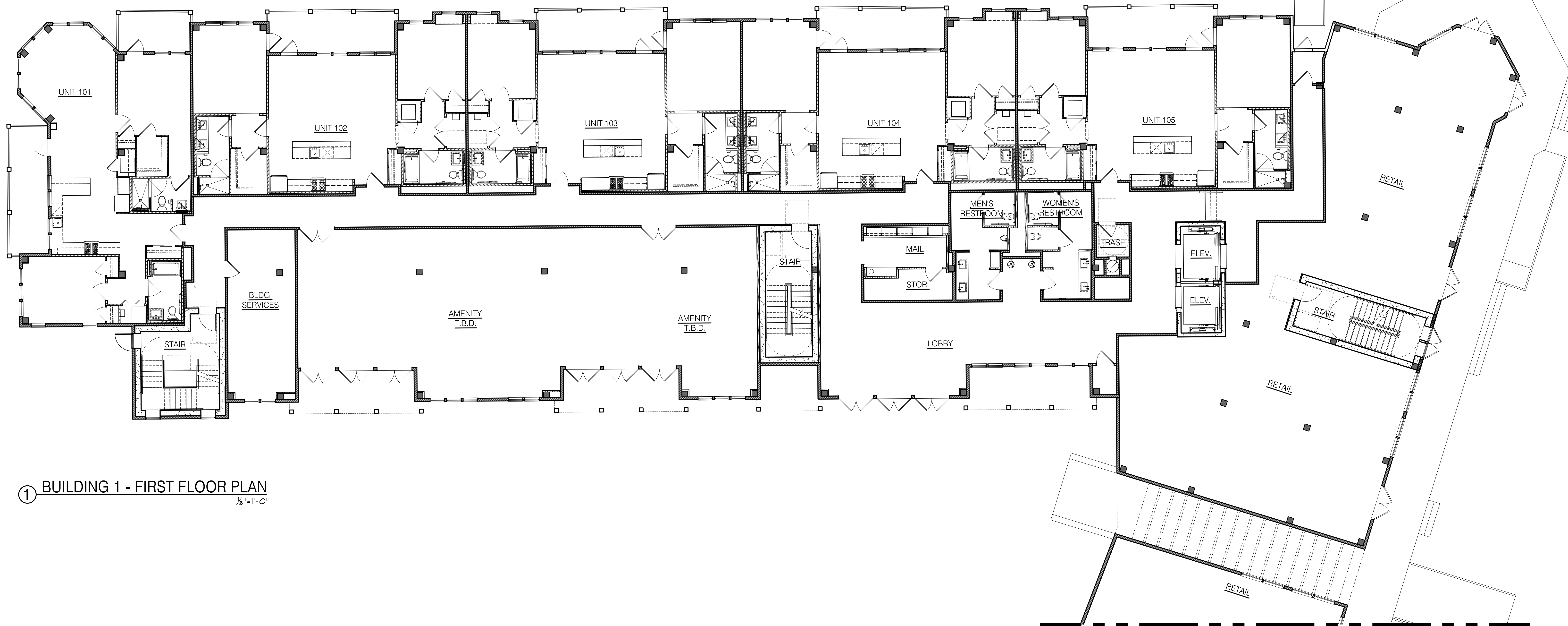
SHORE POINT ARCHITECTURE, PA
108 South Main Street, Ocean Grove, New Jersey 07756
P: 732.774.6900 F: 732.774.7260 www.shorepointarch.com

GARAGE LEVEL PLAN
SCALE: AS SHOWN
DRAWN: JC

DATE	REVISION
5/14/2019	REDEVELOPMENT ENTITY RESUBMISSION
6/21/2019	PLANNING BOARD SUBMISSION
3/29/2020	HPC REVISIONS
4/22/2021	HPC REVISIONS
8/19/2021	HPC REVISIONS
10/27/2021	HPC REVISIONS
1/28/2022	HPC REVISIONS

JOB NUMBER
2018-23

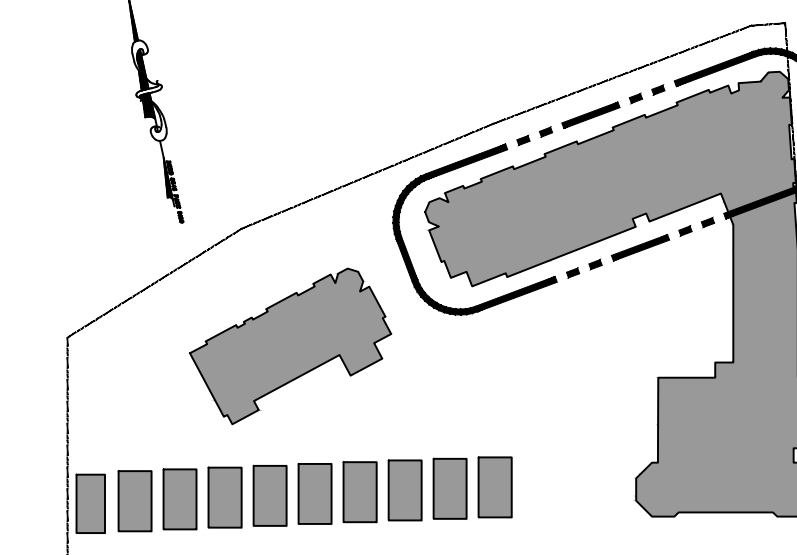
A-1
NORTH END



① BUILDING 1 - FIRST FLOOR PLAN
1/8"=1'-0"



② BUILDING 1 - SECOND FLOOR PLAN
1/8"=1'-0"



KEY PLAN
N.T.S.

PROPOSED NEW CONSTRUCTION FOR:
NORTH END REDEVELOPMENT
(OCEAN GROVE) TOWNSHIP OF NEPTUNE, NJ
BLOCK 101 LOT 2, 3 & 4

SCALE:
[Signature]
Suzanne J. Cardillo, AIA
Principal Architect

SHORE POINT ARCHITECTURE, PA
108 South Main Street, Ocean Grove, New Jersey 07756
P: 732.774.6900 F: 732.774.7280 www.shorepointarch.com

BUILDING 1 - FIRST AND SECOND FLOOR PLANS
DRAWN: JG
SCALE: AS SHOWN

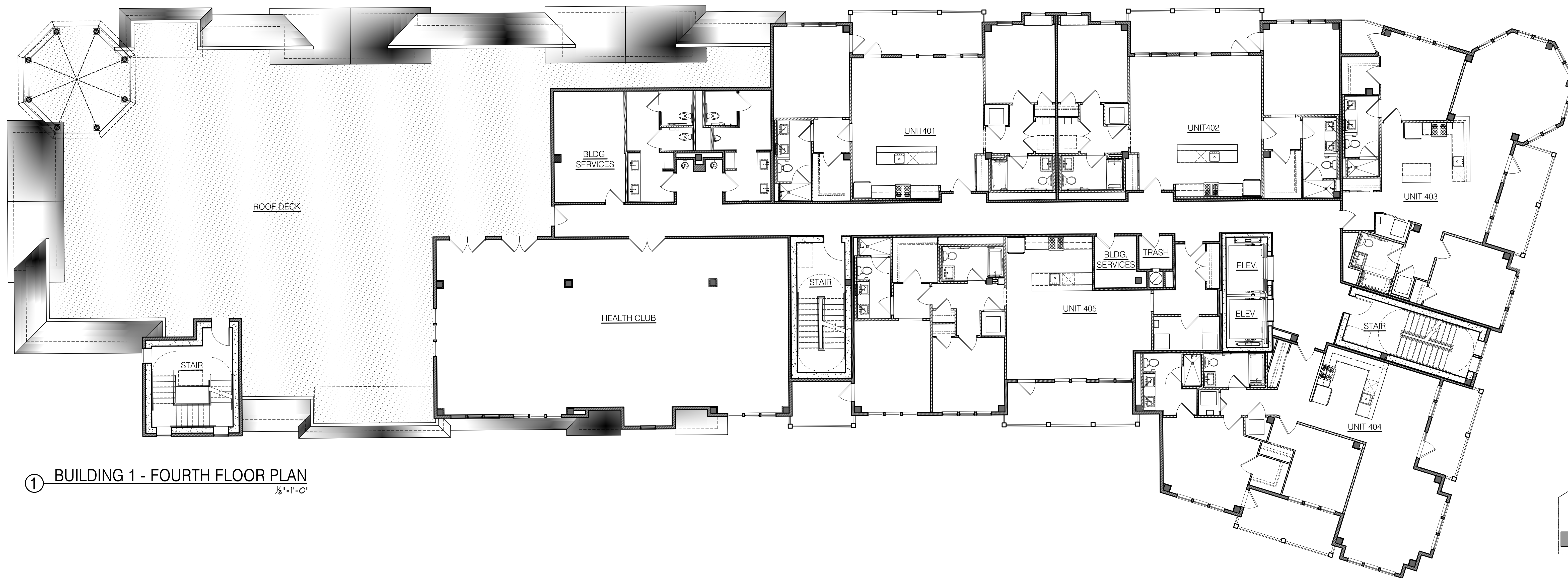
DATE	REVISION
5/14/2019	REDEVELOPMENT ENTITY RESUBMISSION
6/21/2019	PLANNING BOARD SUBMISSION
3/9/2020	HPC REVISIONS
4/22/2021	HPC REVISIONS APPROVAL
8/19/2021	HPC REVISIONS
10/27/2021	HPC REVISIONS
1/28/2022	HPC REVISIONS

JOB NUMBER
2018-23

A-2
NORTH END



① BUILDING 1 - THIRD FLOOR PLAN
1/8"=1'-0"



① BUILDING 1 - FOURTH FLOOR PLAN
1/8"=1'-0"

KEY PLAN
N.T.S.

PROPOSED NEW CONSTRUCTION FOR:
NORTH END REDEVELOPMENT
(OCEAN GROVE) TOWNSHIP OF NEPTUNE, NJ
BLOCK 101 LOT 2, 3 & 4

SCALE:
[Signature]
Suzanne J. Cardillo, AIA
Principal Architect

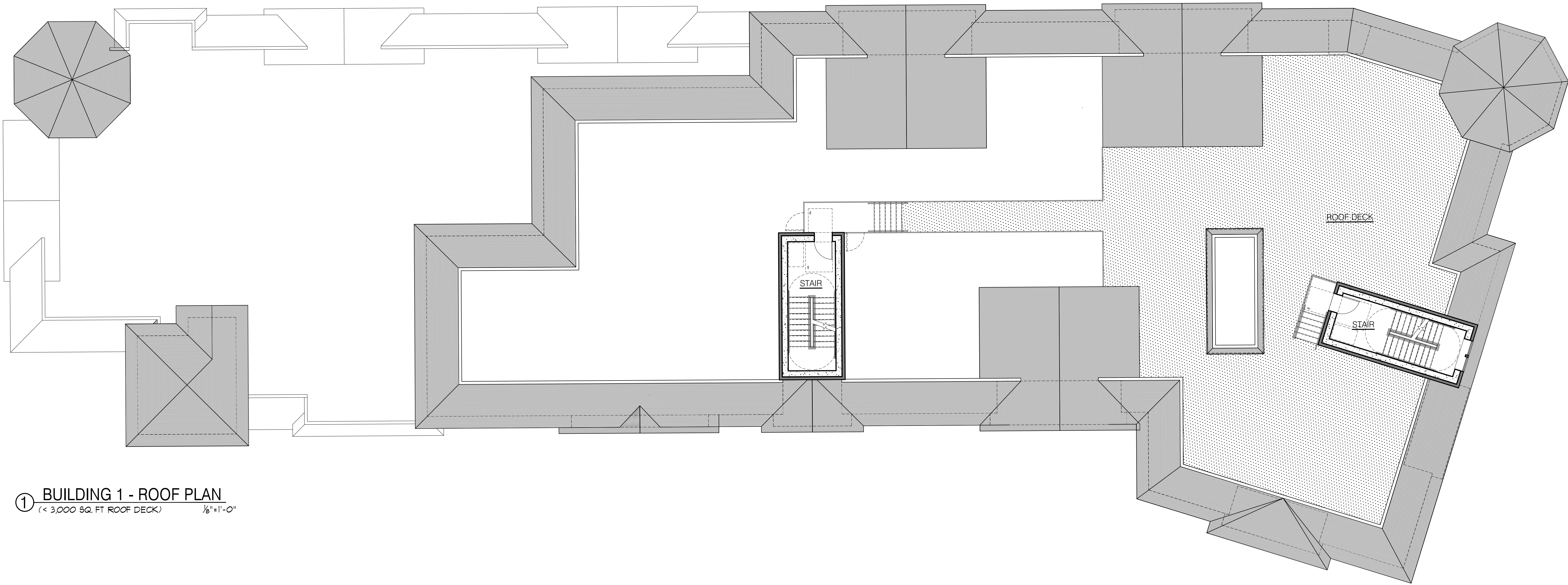
SHORE POINT ARCHITECTURE, PA
108 South Main Street, Ocean Grove, New Jersey 07756
P: 732.774.6900 F: 732.774.7280 www.shorepointarch.com

BUILDING 1 - THIRD AND FOURTH FLOOR PLANS
SCALE: AS SHOWN
DRAWN: JG

DATE	REVISION
5/14/2019	REDEVELOPMENT ENTITY RESUBMISSION
6/21/2019	PLANNING BOARD SUBMISSION
3/9/2020	HPC REVISIONS
4/22/2021	HPC REVISIONS APPROVAL
8/19/2021	HPC REVISIONS
10/27/2021	HPC REVISIONS
1/28/2022	HPC REVISIONS

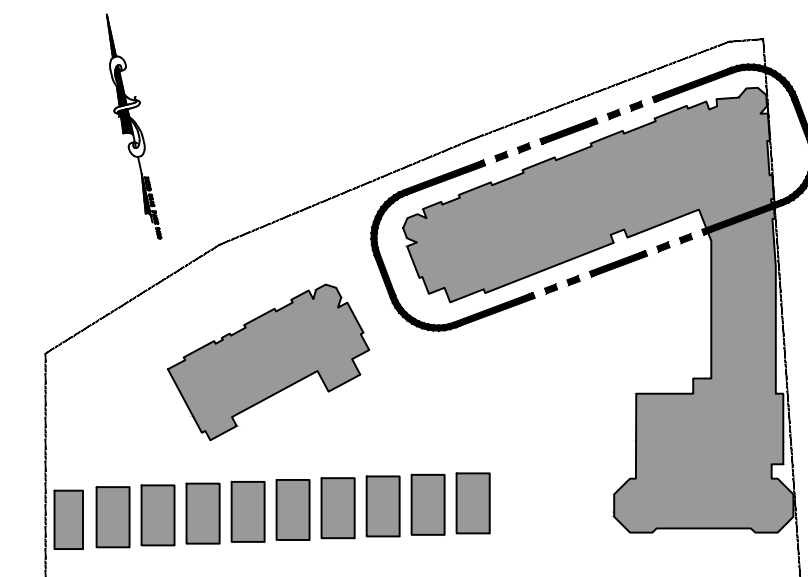
JOB NUMBER
2018-23

A-3
NORTH END



① BUILDING 1 - ROOF PLAN
 (< 3,000 SQ. FT. ROOF DECK) 1/8"=1'-0"

KEY
 [Hatched Box] INDICATES AREA OF ROOF DECK



KEY PLAN
 N.T.S.

PROPOSED NEW CONSTRUCTION FOR:
NORTH END REDEVELOPMENT
 (OCEAN GROVE) TOWNSHIP OF NEPTUNE, NJ
 BLOCK 101 LOT 2, 3 & 4

SCALE:
[Signature]
 SHERYL L. CALDWELL, AIA
 PLS-C-01000000

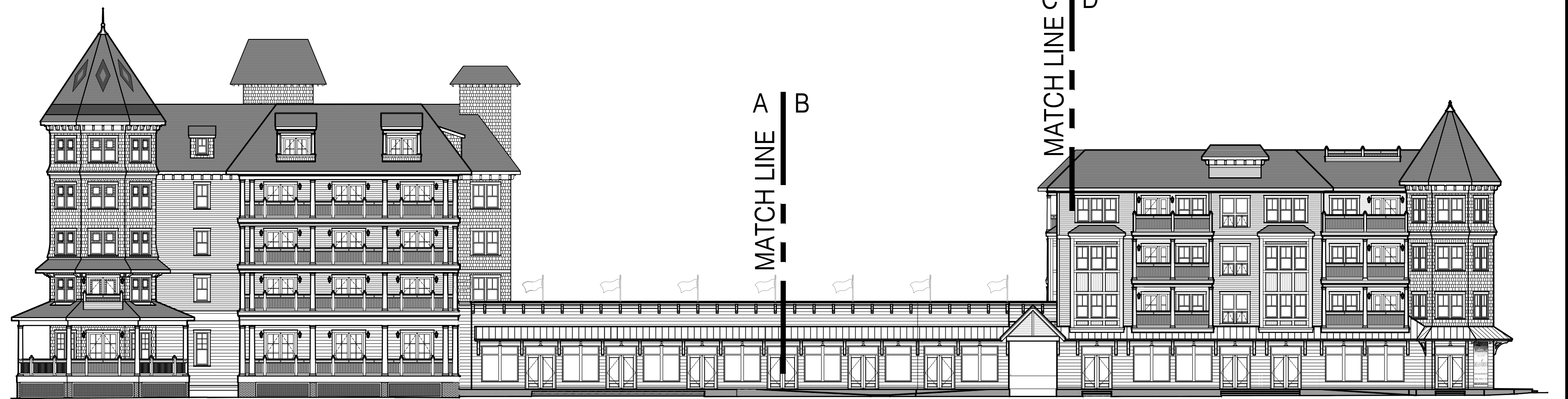
SHORE POINT ARCHITECTURE, PA
 108 South Main Street Ocean Grove, New Jersey 07756
 P: 732.774.6900 F: 732.774.7260 www.shorepointarch.com

BUILDING 1 - ROOF PLAN
 SCALE: AS SHOWN
 DRAWN: JG

DATE	REVISION
5/14/2019	REDEVELOPMENT ENTITY RESUBMISSION
6/21/2019	PLANNING BOARD SUBMISSION
3/9/2020	HPC REVISIONS
4/17/2021	HPC REVISIONS APPROVAL
8/19/2021	HPC REVISIONS
10/27/2021	HPC REVISIONS
1/28/2022	HPC REVISIONS

JOB NUMBER
 2018-23

A-4
 NORTH END



① OVERALL EAST ELEVATION
N.T.S.

REFER TO SHEET A-11 FOR HOTEL ELEVATIONS



NOTE
 * (INDICATES ELEVATION ABOVE SEA LEVEL)
 (INDICATES ELEVATION ABOVE AVERAGE GRADE PLANE)

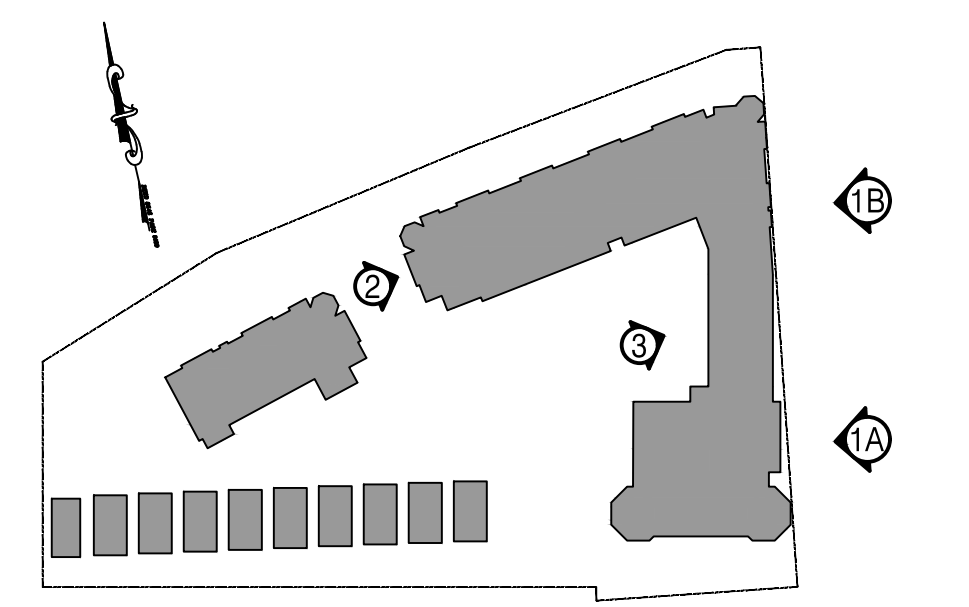
①A EAST ELEVATION-A
1/8"=1'-0"

REFER TO SHEET A-11 FOR HOTEL ELEVATIONS



③ PARTIAL WEST ELEVATION
N.T.S.

REFER TO SHEET A-11 FOR HOTEL ELEVATIONS



KEY PLAN
N.T.S.



①B EAST ELEVATION-B
1/8"=1'-0"

NOTE
 * (INDICATES ELEVATION ABOVE SEA LEVEL)
 (INDICATES ELEVATION ABOVE AVERAGE GRADE PLANE)



② WEST ELEVATION
1/8"=1'-0"

NOTE
 * (INDICATES ELEVATION ABOVE SEA LEVEL)
 (INDICATES ELEVATION ABOVE AVERAGE GRADE PLANE)

PROPOSED NEW CONSTRUCTION FOR:
NORTH END REDEVELOPMENT
 (OCEAN GROVE) TOWNSHIP OF NEPTUNE, NJ
 BLOCK 101 LOT 2, 3 & 4

SCALE:

 Stephen J. Callegari, P.E.
 No. 12126, State of NJ

SHORE POINT ARCHITECTURE, PA
 108 South Main Street Ocean Grove, New Jersey 07756
 P: 732.774.6900 F: 732.774.7280 www.shorepointarch.com

BUILDING 1 - ELEVATIONS
 DRAWN: JG
 SCALE: AS SHOWN

DATE	REVISION
5/14/2019	REDEVELOPMENT ENTITY RESUBMISSION
6/21/2019	PLANNING BOARD SUBMISSION
3/29/2020	HPC REVISIONS APPROVAL
4/22/2021	HPC REVISIONS APPROVAL
8/19/2021	HPC REVISIONS
10/27/2021	HPC REVISIONS
1/28/2022	HPC REVISIONS

JOB NUMBER
2018-23

A-5
 NORTH END



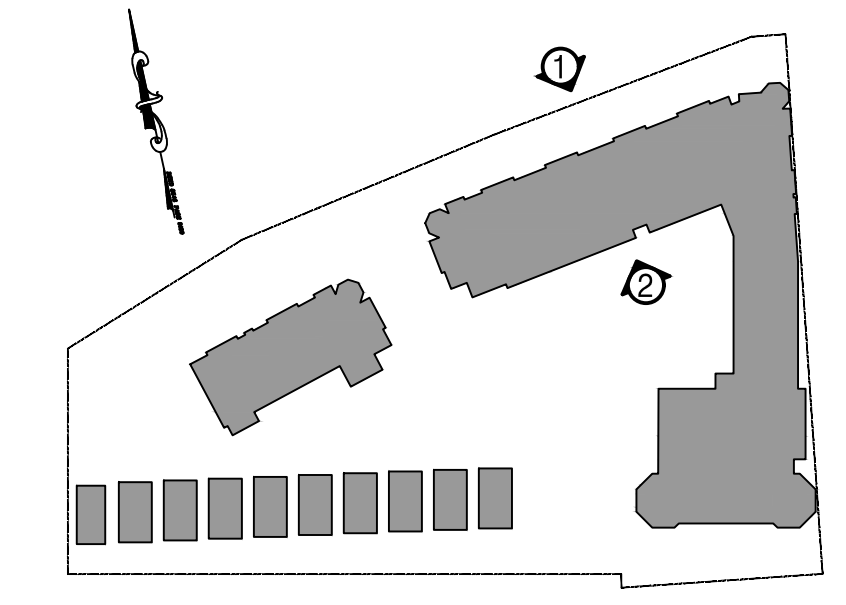
NOTE
 * INDICATES ELEVATION ABOVE SEA LEVEL
 (INDICATES ELEVATION ABOVE AVERAGE GRADE PLANE)

① NORTH ELEVATION
 1/8" = 1'-0"



NOTE
 * INDICATES ELEVATION ABOVE SEA LEVEL
 (INDICATES ELEVATION ABOVE AVERAGE GRADE PLANE)

② SOUTH ELEVATION
 1/8" = 1'-0"



KEY PLAN
 N.T.S.

PROPOSED NEW CONSTRUCTION FOR:
NORTH END REDEVELOPMENT
 (OCEAN GROVE) TOWNSHIP OF NEPTUNE, NJ
 BLOCK 101 LOT 2, 3 & 4

SCALE:

 Steven J. Carlini, AIA
 Principal Architect

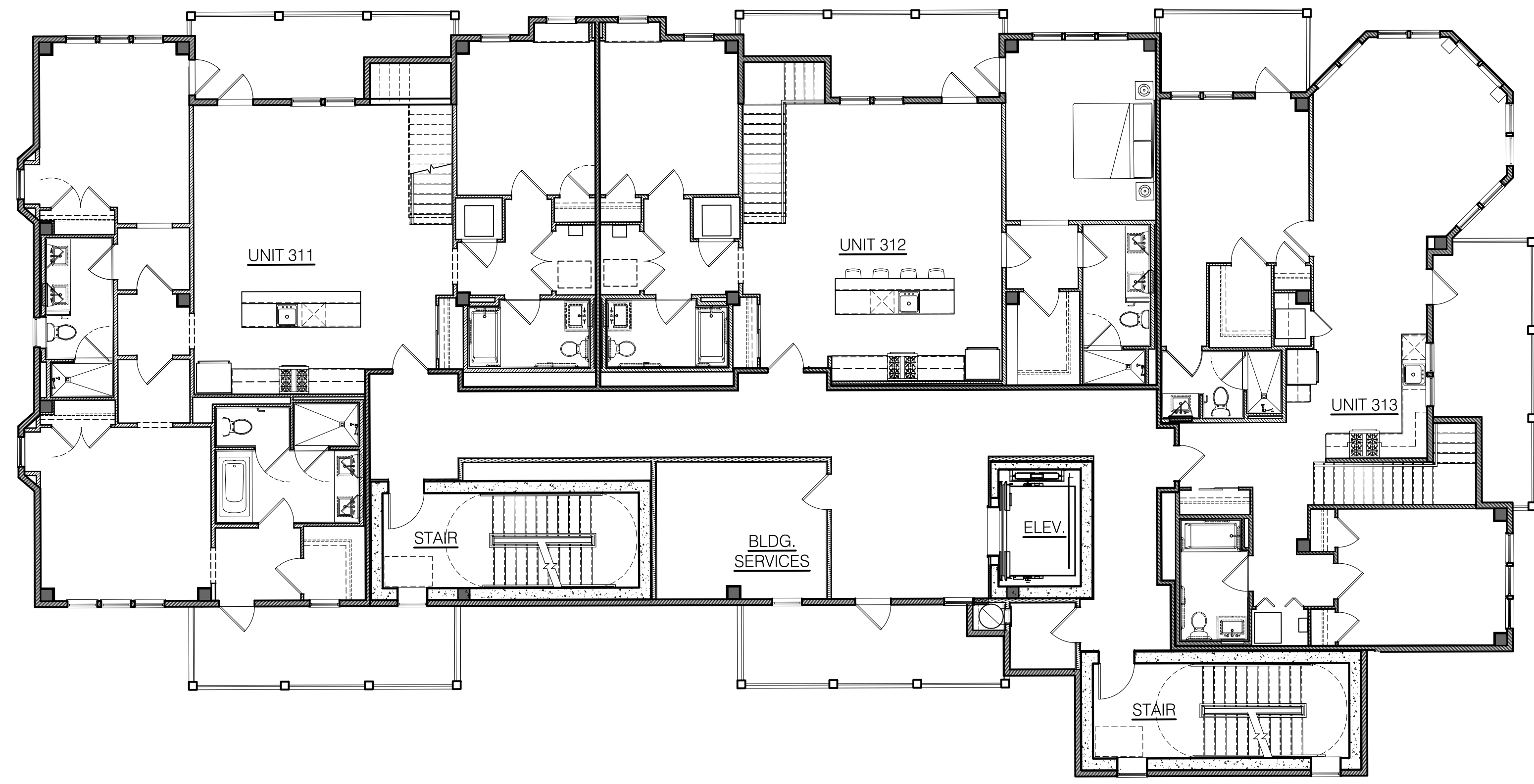
SHORE POINT ARCHITECTURE, PA
 108 South Main Street, Ocean Grove, New Jersey 07756
 P: 732.774.6900 F: 732.774.7250 www.shorepointarch.com

BUILDING 1 - ELEVATIONS
 SCALE: AS SHOWN
 DRAWN: JG

DATE	REVISION
5/14/2019	REDEVELOPMENT ENTRY SUBMISSION
6/21/2019	PLANNING BOARD SUBMISSION
3/29/2020	HPC REVISIONS
4/22/2021	HPC REVISIONS
8/19/2021	HPC REVISIONS
10/27/2021	HPC REVISIONS
1/28/2022	HPC REVISIONS

JOB NUMBER
 2018-23

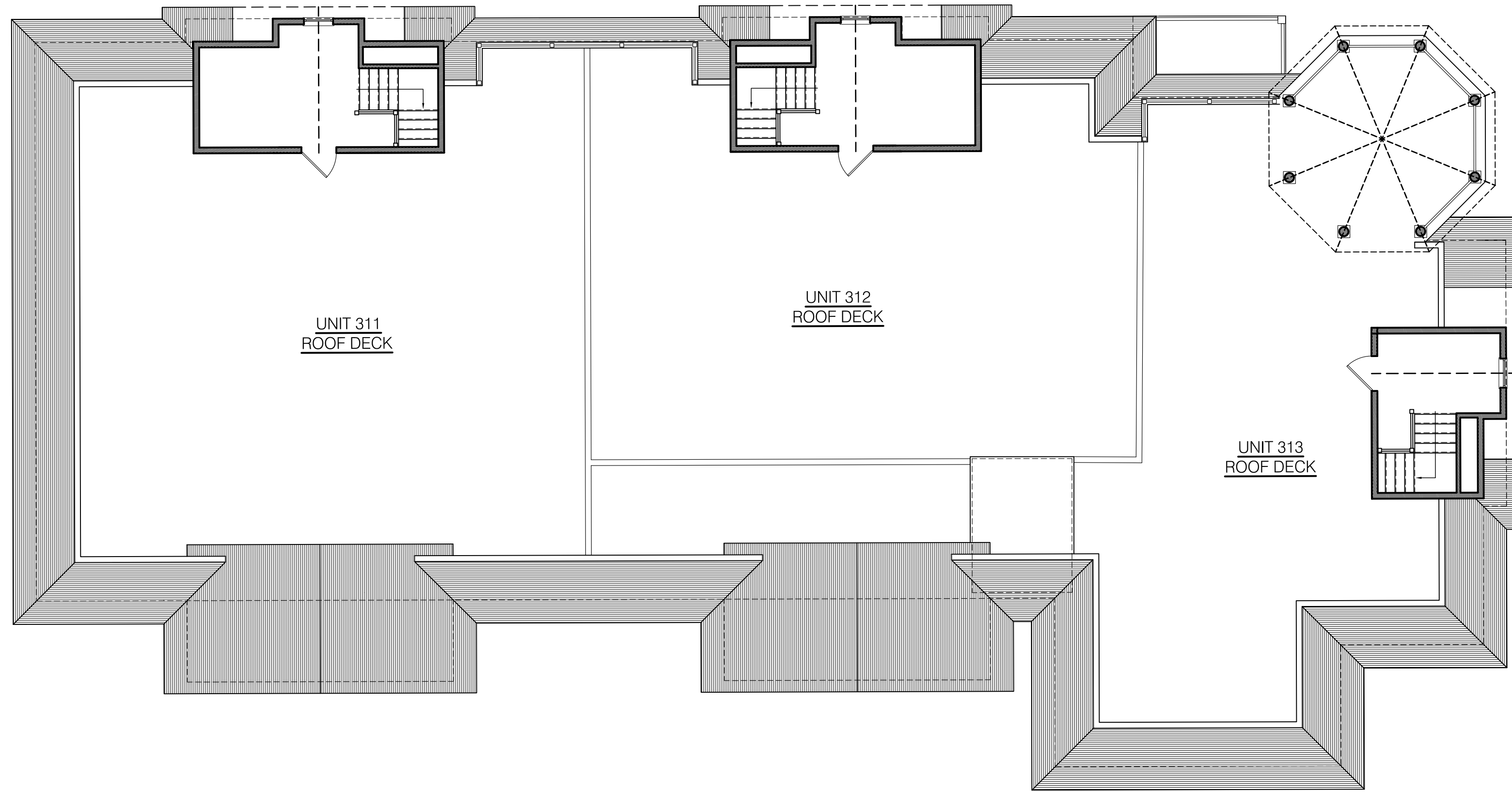
A-6
 NORTH END



③ BUILDING 2 - THIRD FLOOR PLAN
1/8"=1'-0"



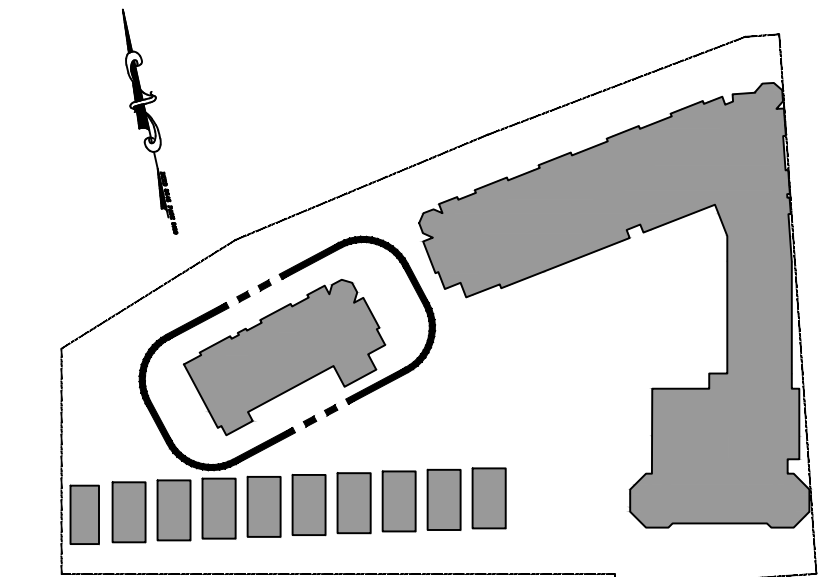
① BUILDING 2 - FIRST FLOOR PLAN
1/8"=1'-0"



④ BUILDING 2 - ROOF PLAN
1/8"=1'-0"



② BUILDING 2 - SECOND FLOOR PLAN
1/8"=1'-0"



KEY PLAN
N.T.S.

PROPOSED NEW CONSTRUCTION FOR:
NORTH END REDEVELOPMENT
(OCEAN GROVE) TOWNSHIP OF NEPTUNE, NJ
BLOCK 101 LOT 2, 3 & 4

SCALE:
[Signature]
Suzanne J. Carlini, AIA
Suzanne@shorepoint.com

SHORE POINT ARCHITECTURE, PA
108 South Main Street, Ocean Grove, New Jersey 07756
P: 732.774.6900 F: 732.774.7280 www.shorepointarch.com

BUILDING 2 - FLOOR PLANS
SCALE: AS SHOWN
DRAWN: JG

DATE	REVISION
5/14/2019	REDEVELOPMENT ENTRY SUBMISSION
6/21/2019	PLANNING BOARD SUBMISSION
3/29/2020	HPC REVISIONS
4/22/2021	HPC REVISIONS APPROVAL
8/19/2021	HPC REVISIONS
10/27/2021	HPC REVISIONS
1/28/2022	HPC REVISIONS

JOB NUMBER
2018-23

A-7
NORTH END



② BUILDING 2 - EAST ELEVATION
1/8"=1'-0"



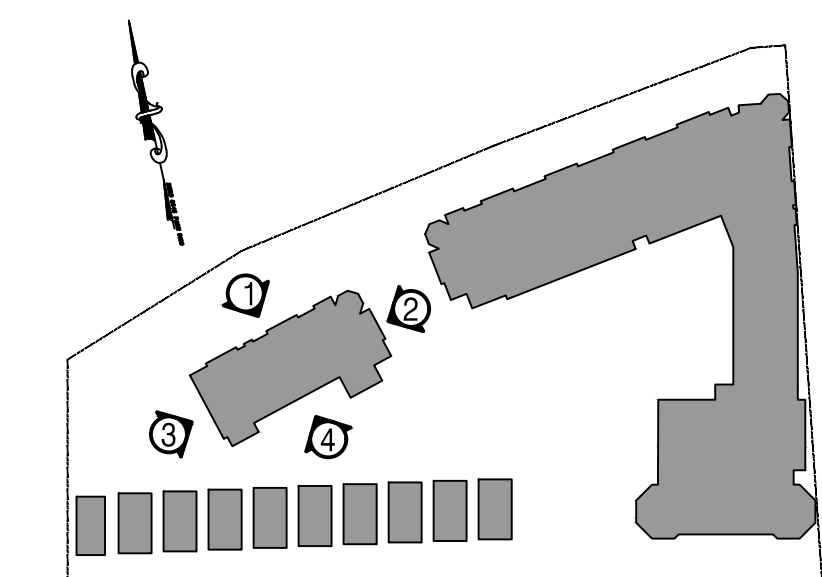
① BUILDING 2 - NORTH ELEVATION
1/8"=1'-0"



④ BUILDING 2 - SOUTH ELEVATION
1/8"=1'-0"

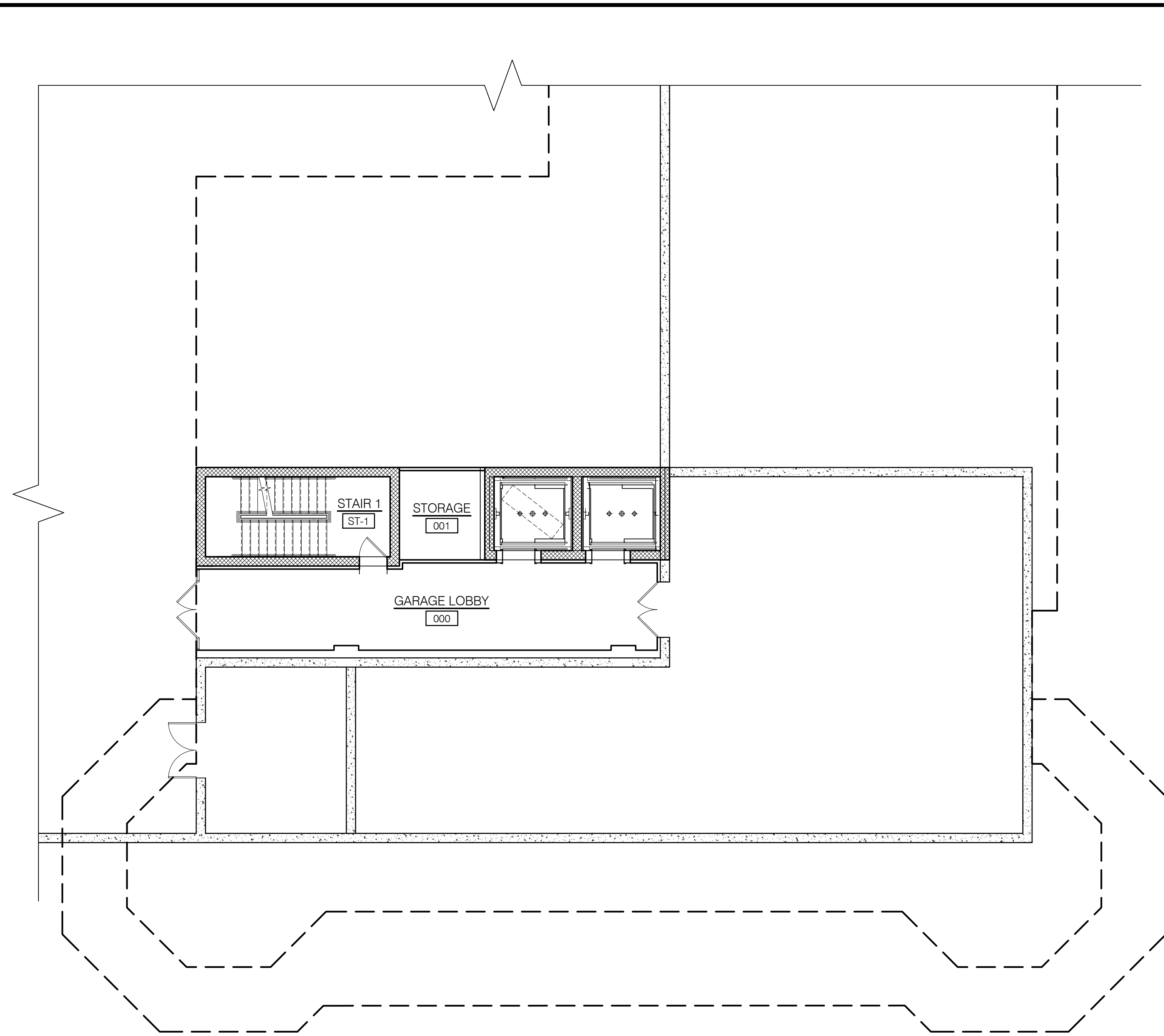
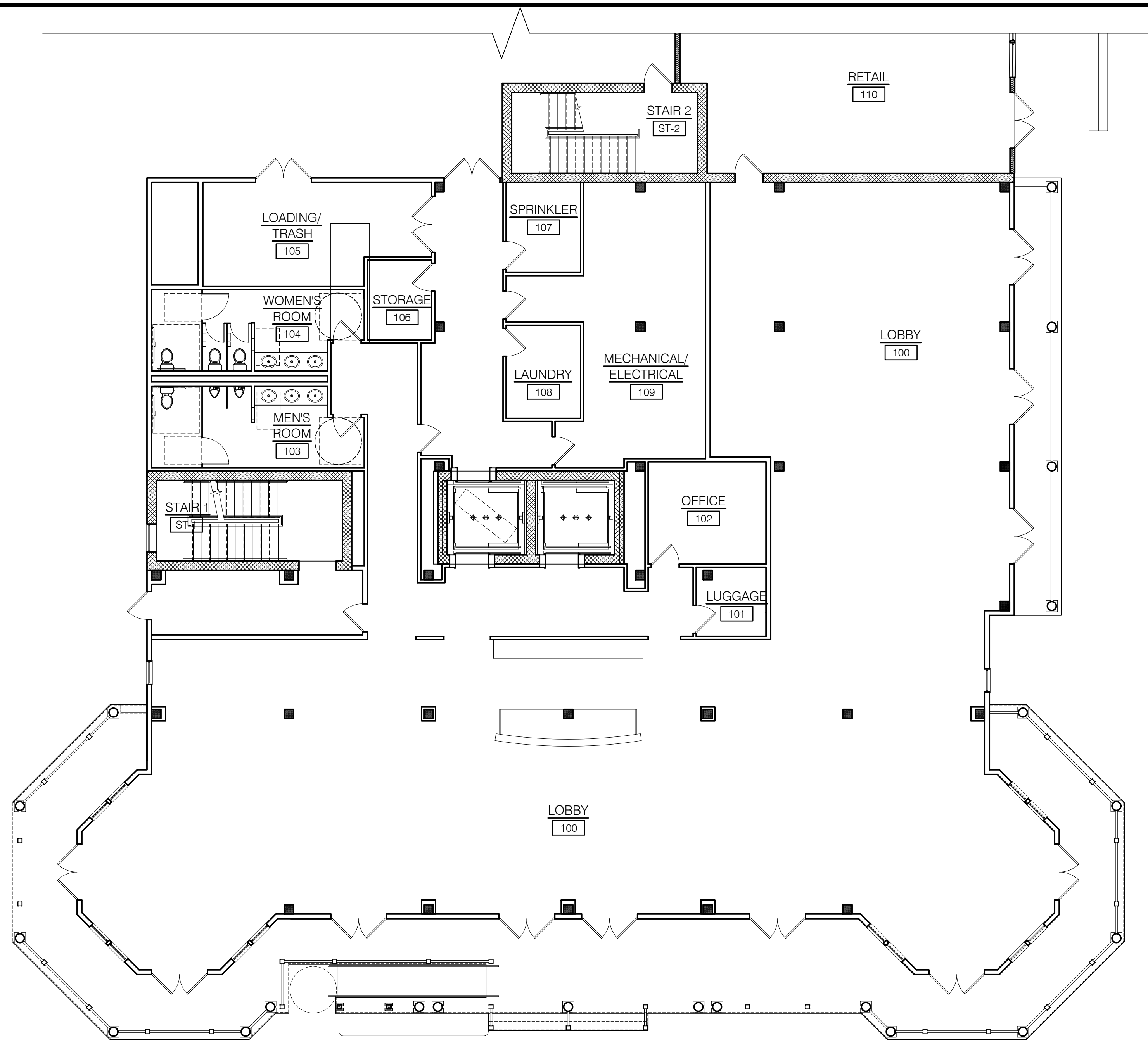


③ BUILDING 2 - WEST ELEVATION
1/8"=1'-0"



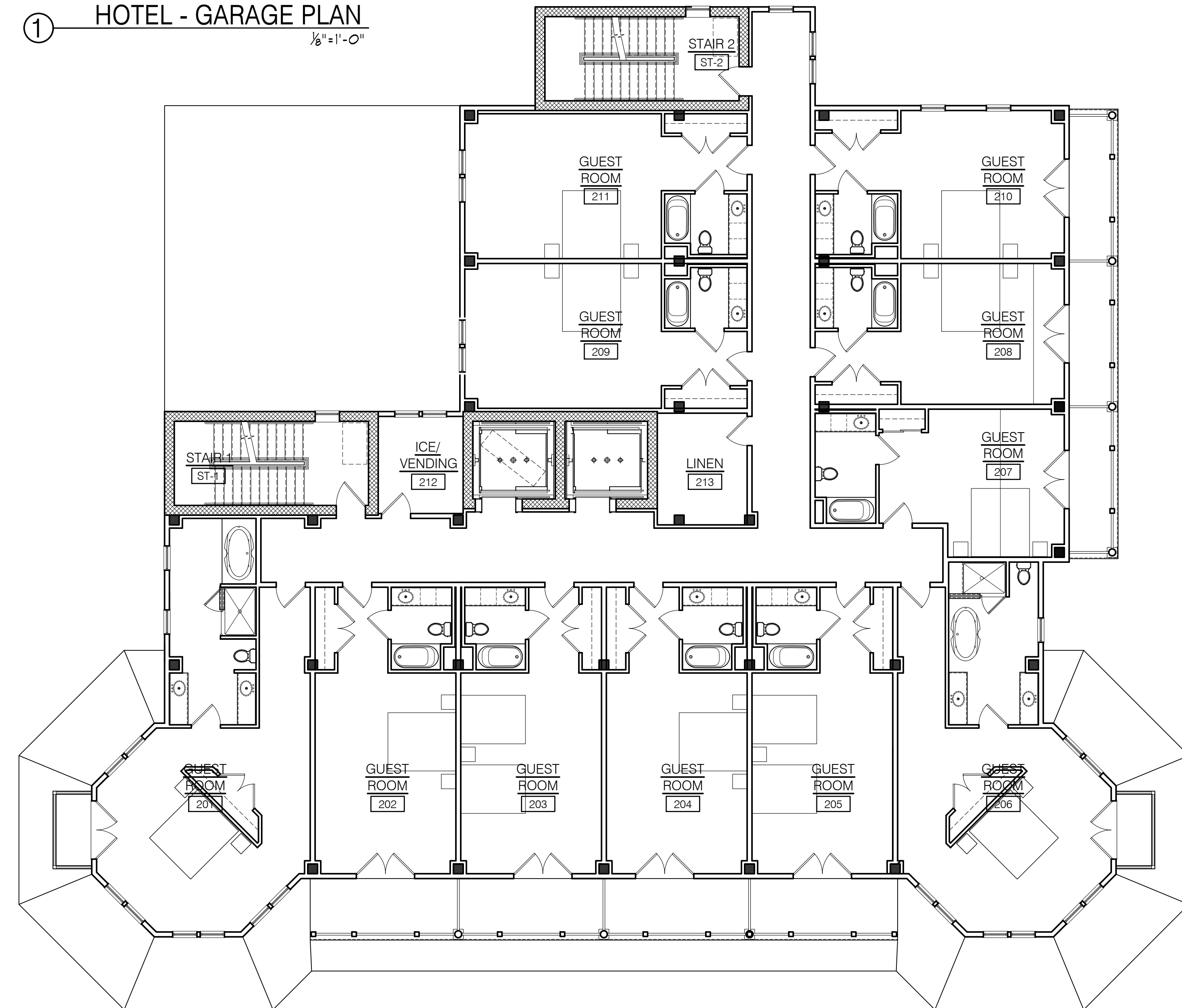
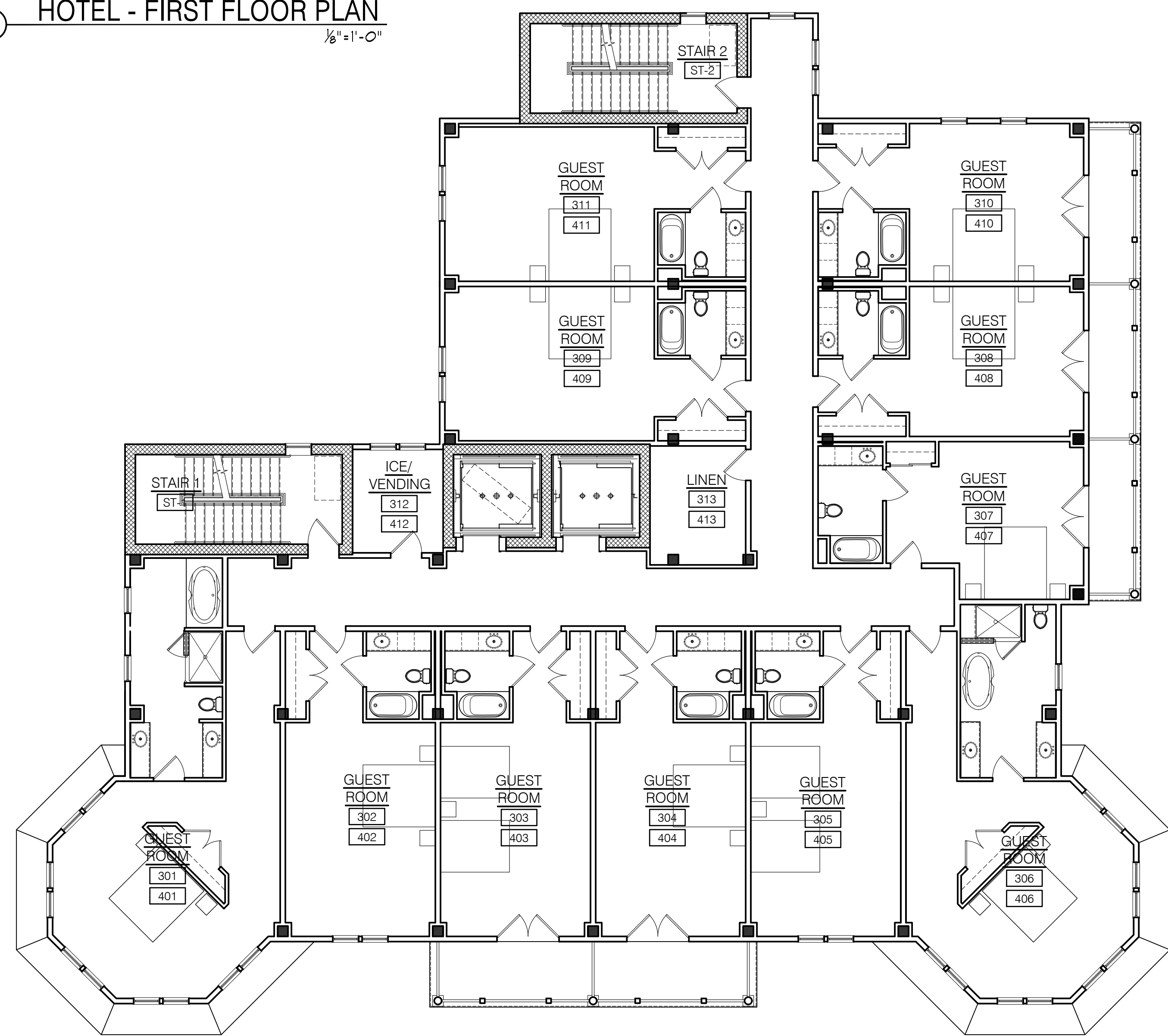
KEY PLAN
N.T.S.

DATE	REVISION
5/14/2019	REDEVELOPMENT ENTRY SUBMISSION
6/21/2019	PLANNING BOARD SUBMISSION
3/29/2020	HPC REVISIONS
4/22/2021	HPC REVISIONS
8/19/2021	HPC REVISIONS
10/27/2021	HPC REVISIONS
1/28/2022	HPC REVISIONS



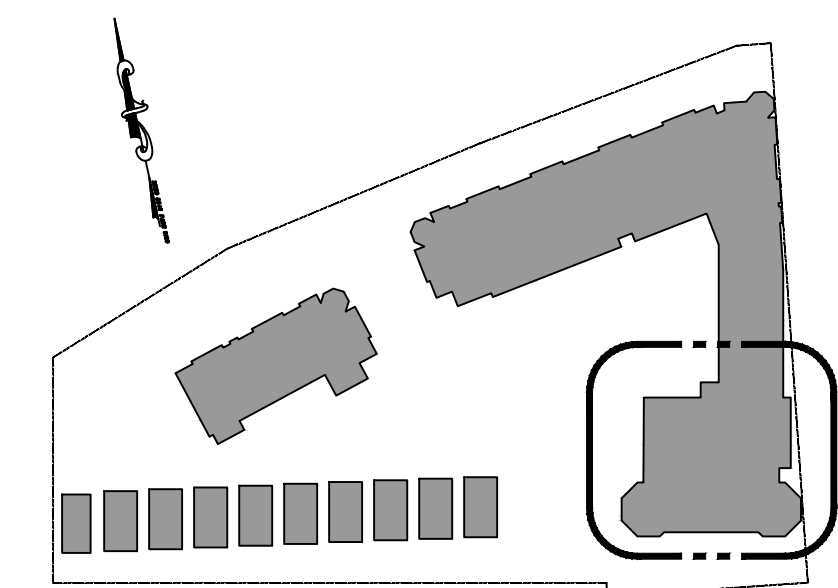
② HOTEL - FIRST FLOOR PLAN
1/8" = 1'-0"

① HOTEL - GARAGE PLAN
1/8" = 1'-0"



④ HOTEL - THIRD & FOURTH FLOOR PLAN
1/8" = 1'-0"

③ HOTEL - SECOND FLOOR PLAN
1/8" = 1'-0"



KEY PLAN
N.T.S.

PROPOSED NEW CONSTRUCTION FOR:
NORTH END REDEVELOPMENT
(OCEAN GROVE) TOWNSHIP OF NEPTUNE, NJ
BLOCK 101 LOT 2, 3 & 4

SCALE:
[Signature]
Shore Point Architecture, PA
108 South Main Street, Ocean Grove, New Jersey 07756
P: 732.774.6900 F: 732.774.7280 www.shorepointarch.com

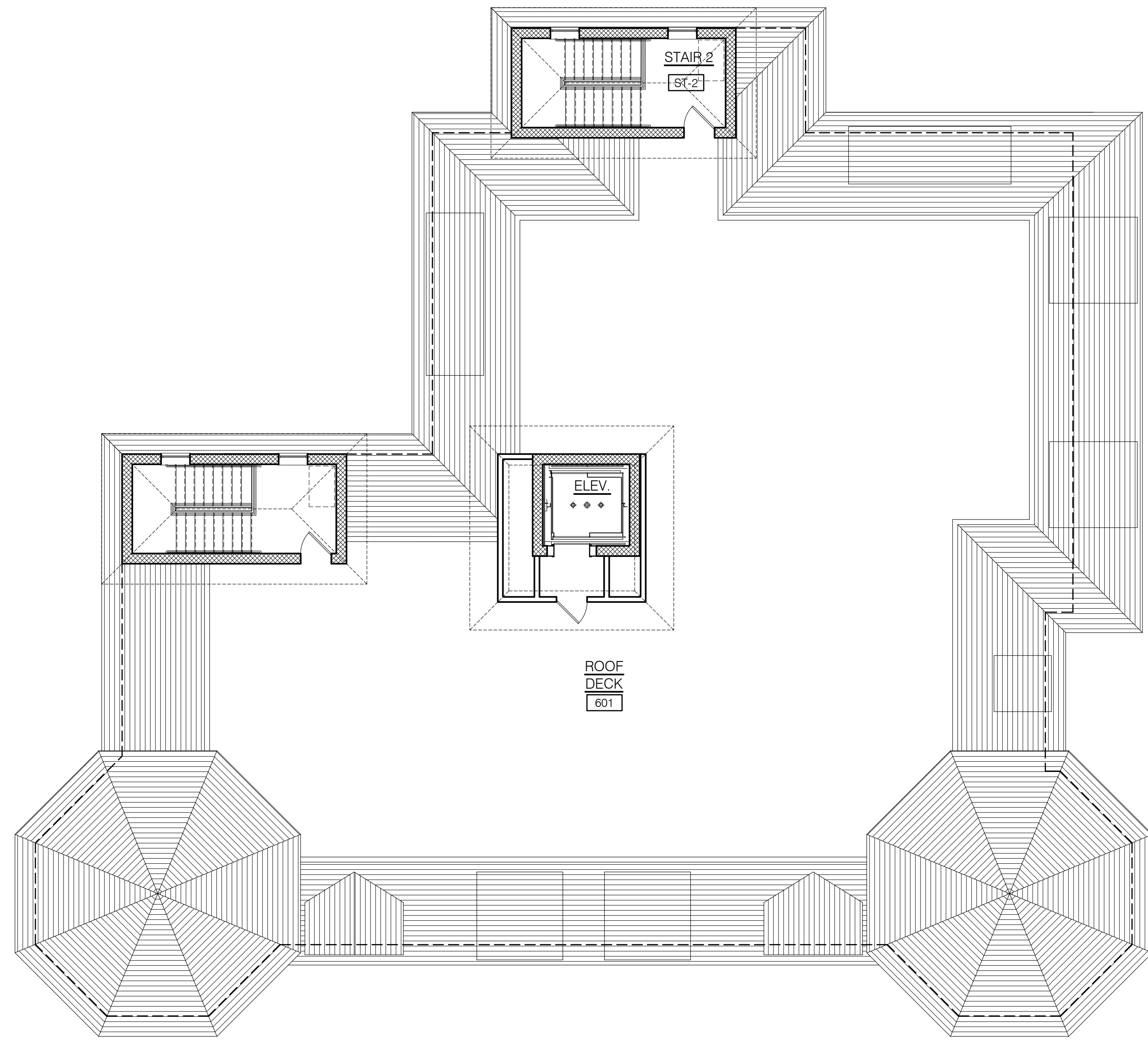
SHORE POINT ARCHITECTURE, PA
108 South Main Street, Ocean Grove, New Jersey 07756
P: 732.774.6900 F: 732.774.7280 www.shorepointarch.com

HOTEL GARAGE LEVEL, FIRST SECOND, THIRD & FOURTH FLOOR PLANS
SCALE: AS SHOWN
DRAWN: JG

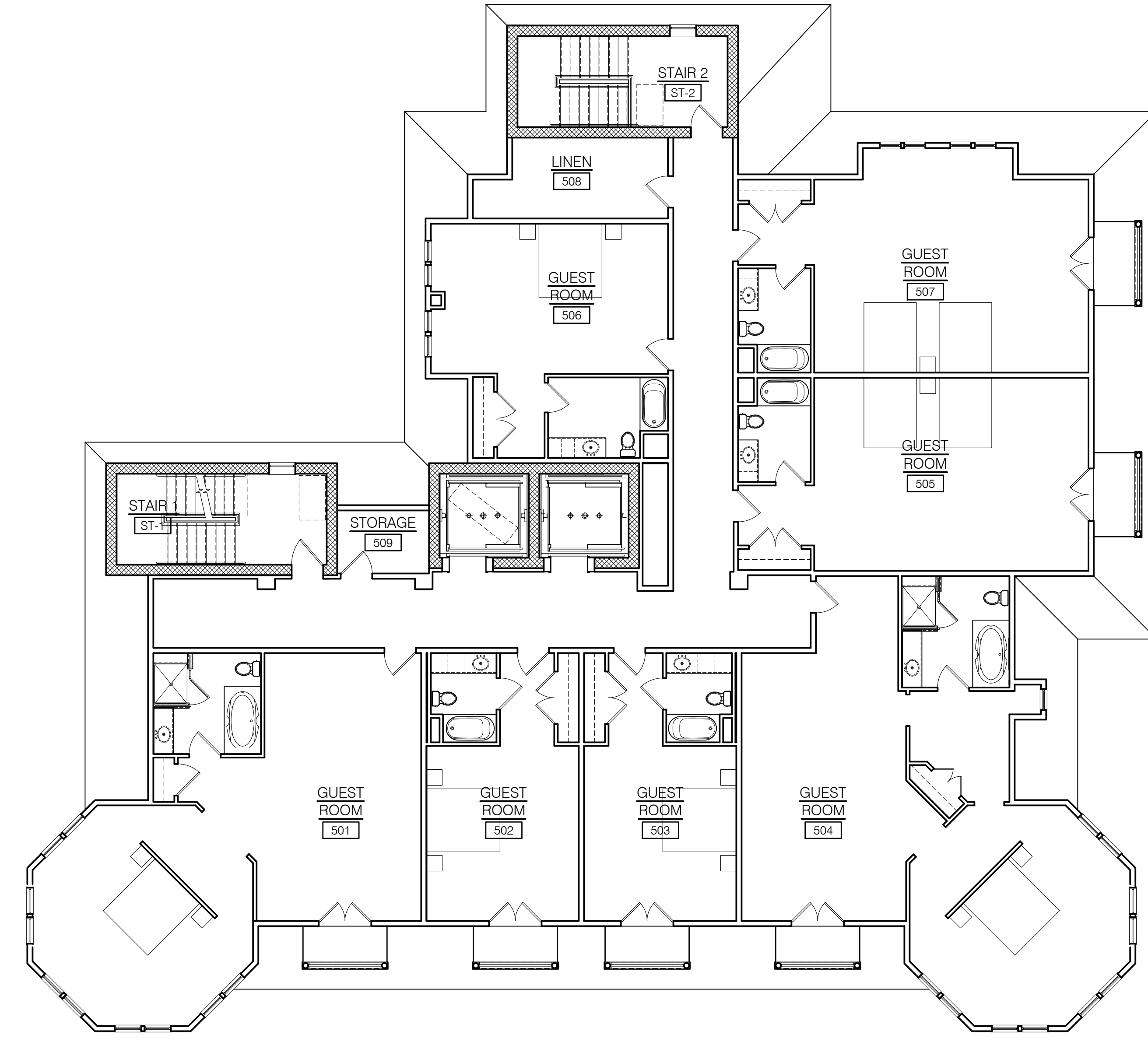
DATE	REVISION
5/14/2019	REDEVELOPMENT ENTRY SUBMISSION
6/21/2019	PLANNING BOARD SUBMISSION
3/29/2020	HPC REVISIONS
4/22/2021	HPC REVISIONS
8/19/2021	HPC REVISIONS
10/27/2021	HPC REVISIONS
1/28/2022	HPC REVISIONS

JOB NUMBER
2018-23

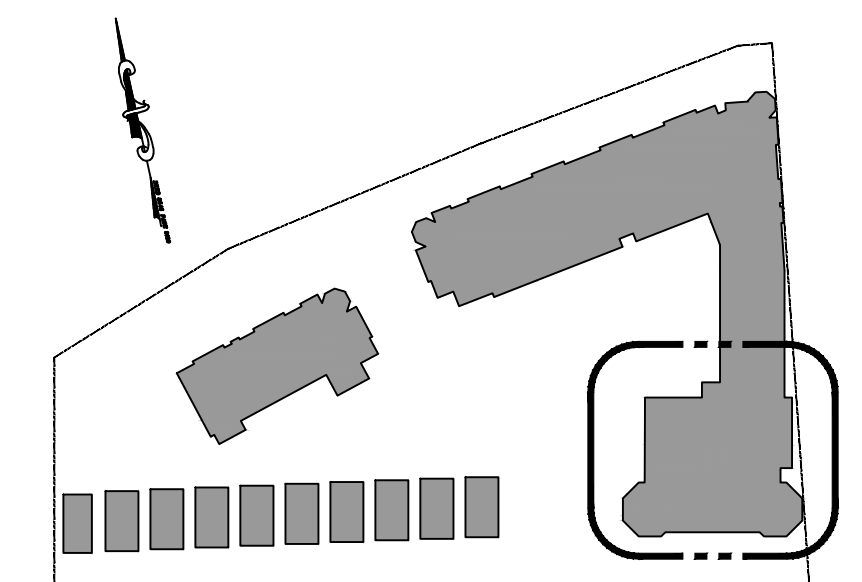
A-9
NORTH END



② HOTEL - ROOF DECK PLAN
1/8"=1'-0"



① HOTEL - FIFTH FLOOR PLAN
1/8"=1'-0"



KEY PLAN
N.T.S.

PROPOSED NEW CONSTRUCTION FOR:
NORTH END REDEVELOPMENT
(OCEAN GROVE) TOWNSHIP OF NEPTUNE, NJ
BLOCK 101 LOT 2, 3 & 4

SCALE:
[Signature]
Shore Point Architecture, PA
108 South Main Street, Ocean Grove, New Jersey 07756
P: 732.774.6900 F: 732.774.7260 www.shorepointarch.com

SHORE POINT ARCHITECTURE, PA
108 South Main Street, Ocean Grove, New Jersey 07756
P: 732.774.6900 F: 732.774.7260 www.shorepointarch.com

HOTEL FIFTH FLOOR AND ROOF DECK PLANS
SCALE: AS SHOWN
DRAWN: JG

DATE	REVISION
5/14/2019	REDEVELOPMENT ENTITY SUBMISSION
6/21/2019	PLANNING BOARD SUBMISSION
3/29/2020	HPS REVISIONS
4/16/2020	HPS REVISIONS
4/22/2021	HPS REVISIONS
8/19/2021	HPS REVISIONS
10/27/2021	HPS REVISIONS
1/28/2022	HPS REVISIONS

JOB NUMBER
2018-23

A-10
NORTH END



① HOTEL - SOUTH ELEVATION
1/8"=1'-0"

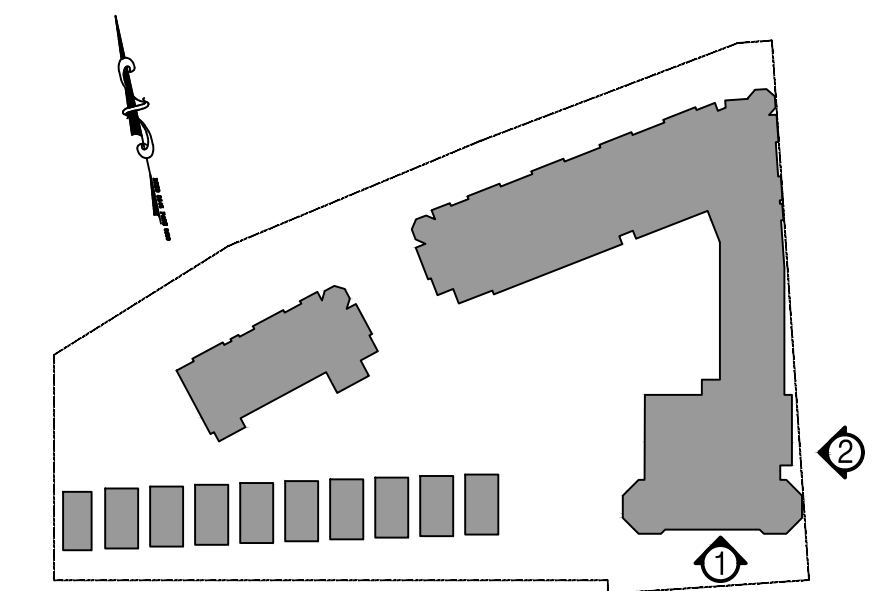
NOTE:
(INDICATES ELEVATION ABOVE SEA LEVEL)
(INDICATES ELEVATION ABOVE AVERAGE GRADE PLANE)



② HOTEL - EAST ELEVATION
1/8"=1'-0"

NOTE:
(INDICATES ELEVATION ABOVE SEA LEVEL)
(INDICATES ELEVATION ABOVE AVERAGE GRADE PLANE)

REFER TO OVERALL ELEVATION ON SHEET A-5



KEY PLAN
N.T.S.

PROPOSED NEW CONSTRUCTION FOR:
NORTH END REDEVELOPMENT
(OCEAN GROVE) TOWNSHIP OF NEPTUNE, NJ
BLOCK 101 LOT 2, 3 & 4

SCALE:
[Signature]
Suzanne J. Carlini, AIA
AIA #124888

SHORE POINT ARCHITECTURE, PA
108 South Main Street Ocean Grove, New Jersey 07756
P: 732.774.6900 F: 732.774.7280 www.shorepointarch.com

HOTEL ELEVATIONS
DRAWN: JG
SCALE: AS SHOWN

DATE	REVISION
5/14/2019	REDEVELOPMENT ENTITY RESUBMISSION
6/21/2019	PLANNING BOARD SUBMISSION
3/29/2020	HPC REVISIONS
4/17/2021	HPC REVISIONS
8/19/2021	HPC REVISIONS
10/27/2021	HPC REVISIONS
1/28/2022	HPC REVISIONS

JOB NUMBER
2018-23

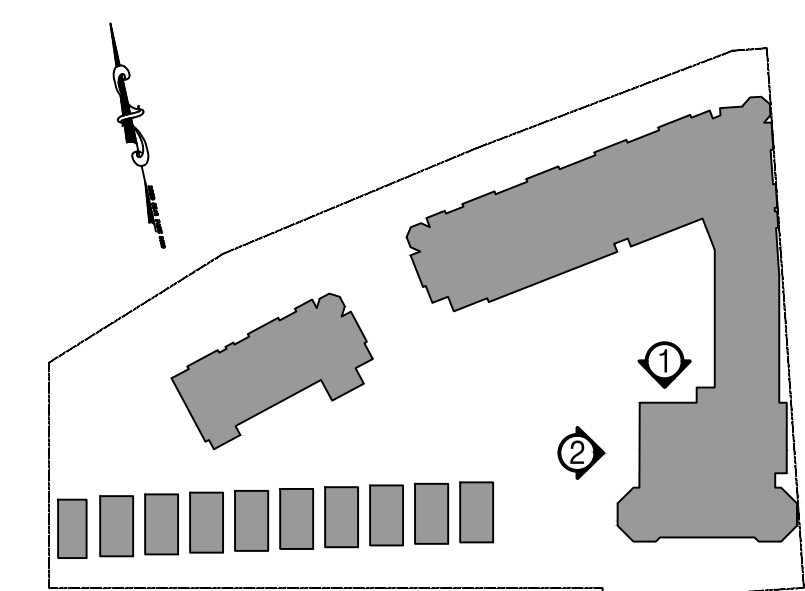
A-11
NORTH END



① HOTEL - NORTH ELEVATION
 1/8" = 1'-0"



② HOTEL - WEST ELEVATION
 1/8" = 1'-0"



KEY PLAN
 N.T.S.

PROPOSED NEW CONSTRUCTION FOR:
NORTH END REDEVELOPMENT
 (OCEAN GROVE) TOWNSHIP OF NEPTUNE, NJ
 BLOCK 101 LOT 2, 3 & 4

SCALE

 Stephen J. Carlini, AIA
 License No. 1312-000008

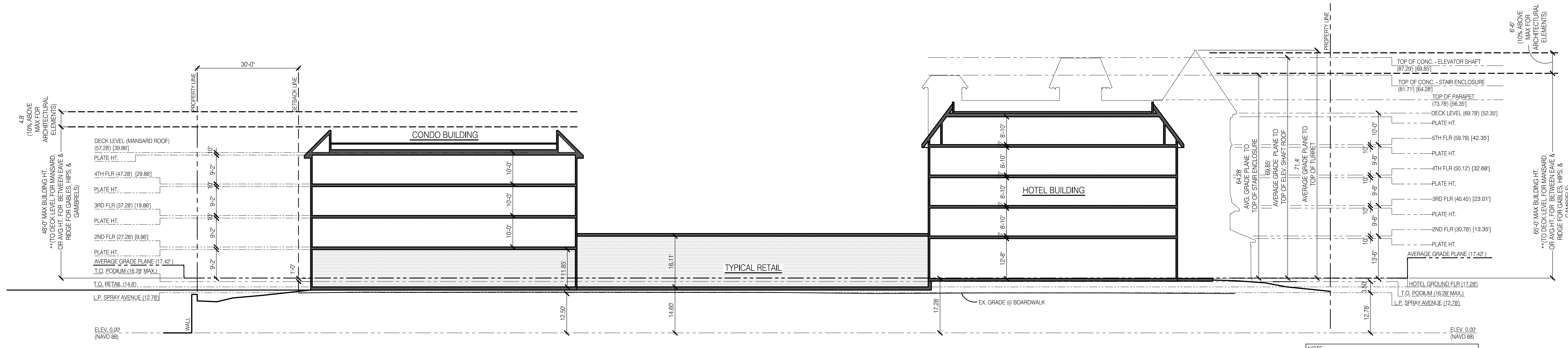
SHORE POINT ARCHITECTURE, PA
 108 South Main Street Ocean Grove, New Jersey 07756
 P: 732.774.6900 F: 732.774.7280 www.shorepointarch.com

DRAWN: JG
HOTEL ELEVATIONS
 SCALE: AS SHOWN

DATE	REVISION
5/14/2019	REDEVELOPMENT ENTITY SUBMISSION
6/21/2019	PLANNING BOARD SUBMISSION
3/29/2020	HPC REVISIONS
4/22/2021	HPC REVISIONS APPROVAL
8/19/2021	HPC REVISIONS
10/27/2021	HPC REVISIONS
1/28/2022	HPC REVISIONS

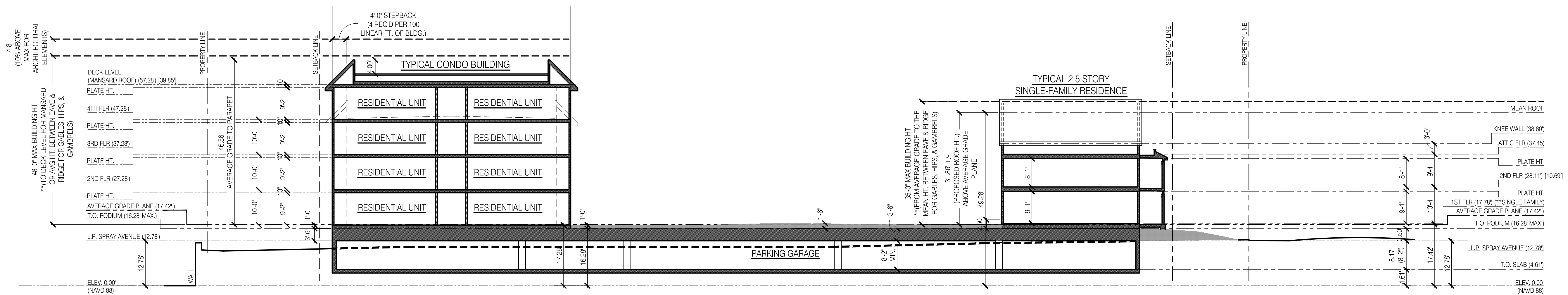
JOB NUMBER
 2018-23

A-12
 NORTH END



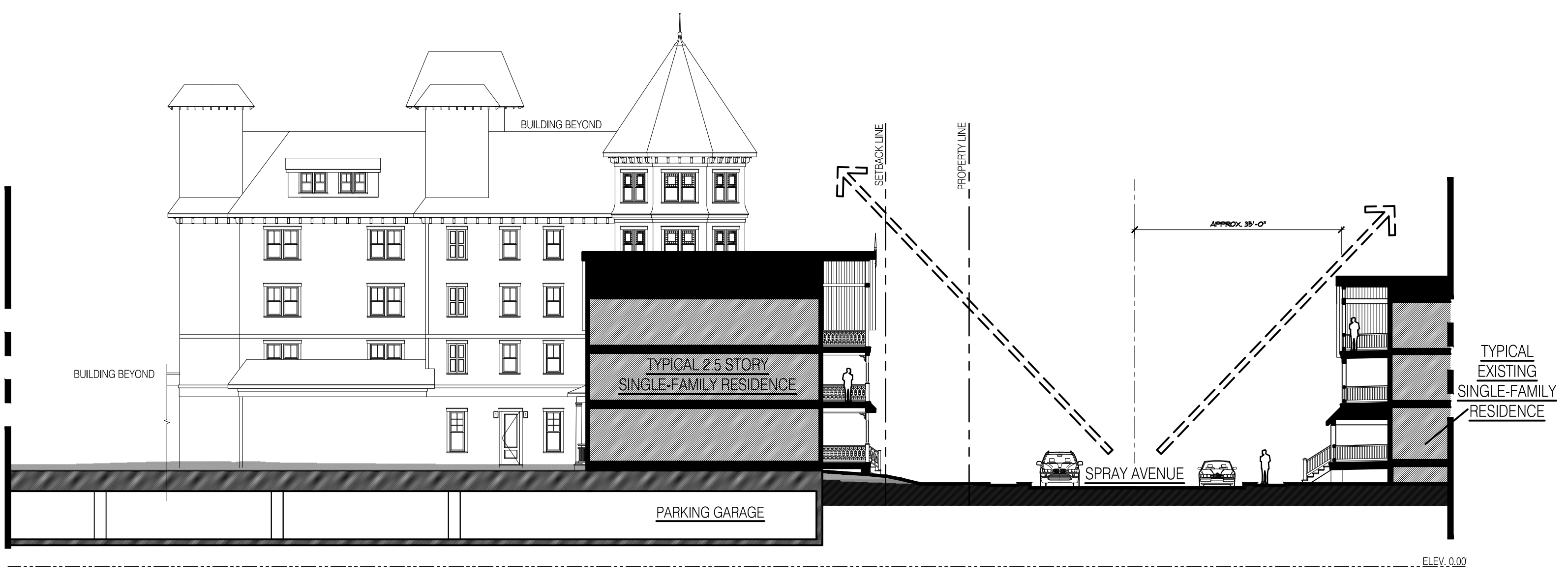
NOTE
 * (INDICATES ELEVATION ABOVE SEA LEVEL)
 (INDICATES ELEVATION ABOVE AVERAGE GRADE PLANE)

SITE SECTION AA
 1/8" = 1'-0"

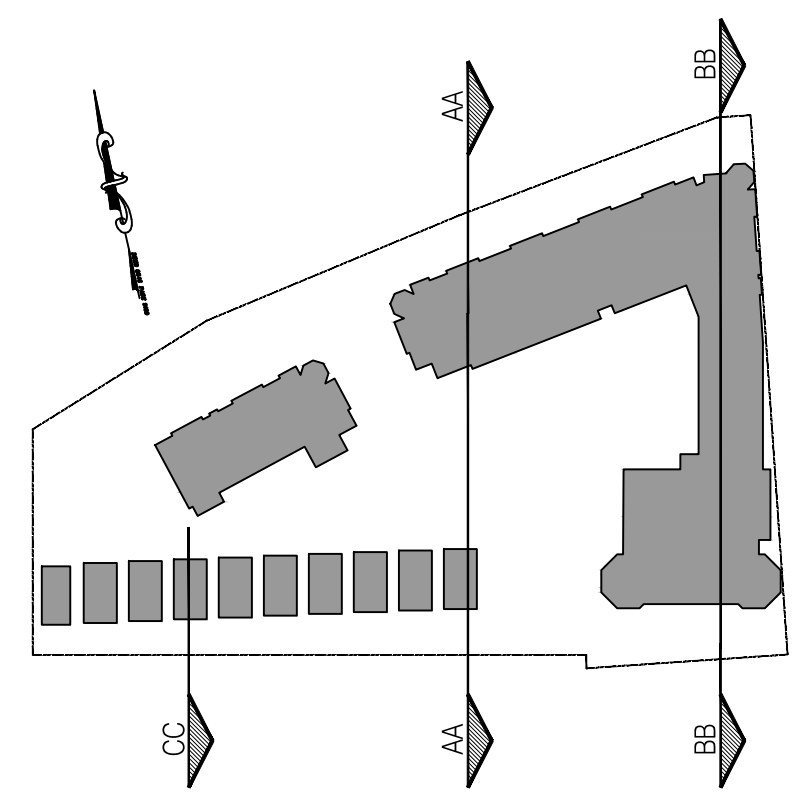


NOTE
 * (INDICATES ELEVATION ABOVE SEA LEVEL)
 (INDICATES ELEVATION ABOVE AVERAGE GRADE PLANE)

SITE SECTION BB
 1/8" = 1'-0"



SECTION DIAGRAM CC
 1/8" = 1'-0"



KEY PLAN
 N.T.S.

SCALE:

 Stephen J. Carlini, P.E.
 No. 12126, State of New Jersey

DATE	REVISION
5/14/2019	REDEVELOPMENT ENTITY RE-SUBMISSION
6/21/2019	PLANNING BOARD SUBMISSION
3/29/2020	HPC REVISIONS
4/22/2021	HPC REVISIONS
8/9/2021	HPC REVISIONS
10/27/2021	HPC REVISIONS
1/28/2022	HPC REVISIONS

JOB NUMBER
2018-23

